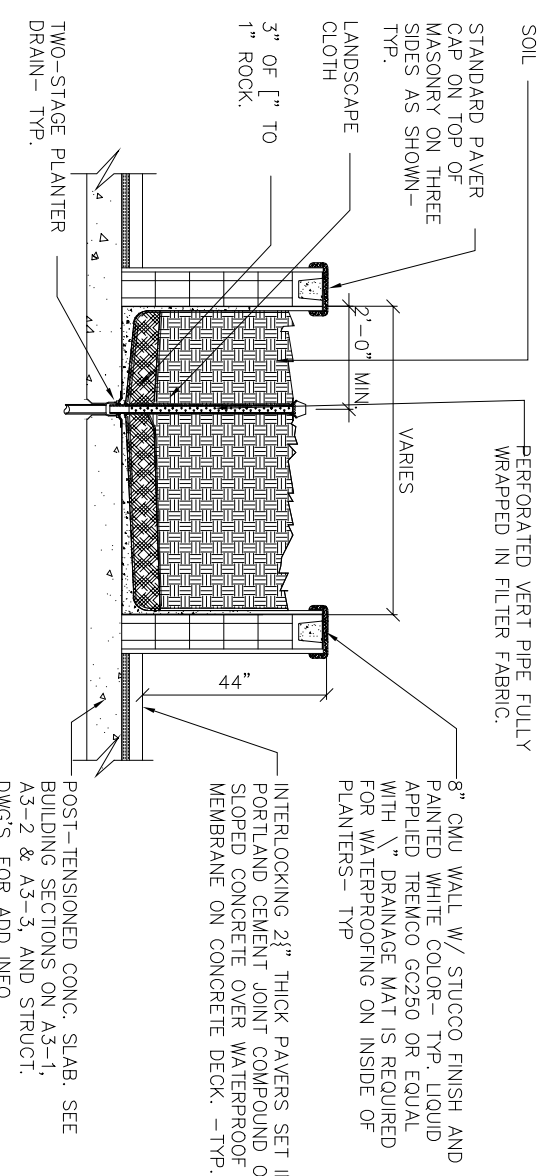


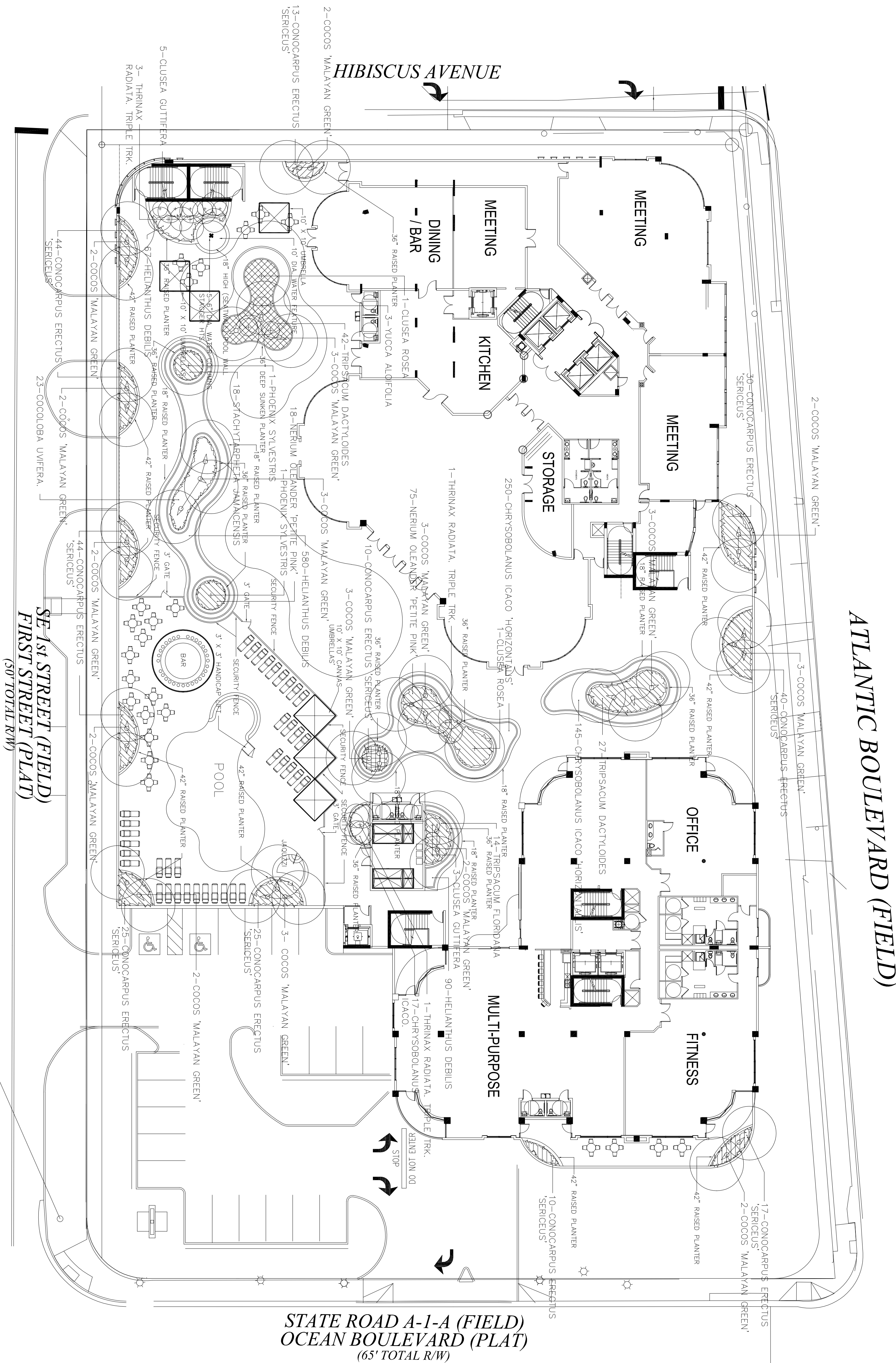
PLANTER DETAIL- TYP.
SCALE: 1/2" = 1'-0"

AT PROMENADE DECK



SINGLE LEVEL PLANTER DETAIL- TYPE

SCALE: 1/2" = 1'-0"



DECK LEVEL LANDSCAPE MATERIALS LIST				
QUANTITY	SPECIFIC NAME TREES AND PLANTS	(COMMON NAME)	SPECIFICATIONS	NATIVE
2	GUSSEA ROSEA	(PITCH APPLE)	14' O.A. X 7'-8" SPR., B&B	YES
20	TRICHANANTHA	(COMMON SPURGE)	6' O.A. THICK BRN., B&B	YES
20	CORALLARIA GREEN*	(LACONIA HAZEL PALM)	6' CLEAR WOOD, B&B	NO
2	PICCONIA SYLVESTRIS	(SILVESTER PALM)	6' CLEAR WOOD, B&B, MATCHING	NO
298	SHRUBS, EXOTICS & TREES			
3	CONOCARPUS FRETUOSUS "SERICEUS"	(SILVER BUTTWOOD)	3 GAL., 24" O.A., 2" O.C.	YES
3	WYCA ALBOFLUA	(SPANISH BAYONNETT)	10 GAL., 5-6' O.A.	YES
17	CHESSBORO AUS ICECO	(COCCOPLUM)	3 GAL., 24" O.A., 2" O.C.	YES
9	STENOCLADYS VIRIDIS	(WHITE BAMBOO)	3 GAL., 24" O.A., 2" O.C.	YES
69	TIBIPACAU DACTILOIDES	(FAJATITCHE GRASS)	3 GAL., 48" SPR., 3" O.C.	YES
23	COCOABA VUFFERA	(SEAGRAPE)	7 GAL., 5' O.A. X 3" SPR., 3" O.C.	YES
14	TIBIPACAU FLORIDANA	(FLORIDA GAMA GRASS)	3 GAL., 18" SPR., 18" O.C.	YES
18	STACHYPHETA JAMAENSIS	(BLUE FORSTERMED)	3 GAL., 18" SPR., 18" O.C.	YES
5	GUSEA GUTIEREA	(SMALL LEAF GUSSEA)	6' O.A. X 4" SPR., B&B, 4' O.C.	YES

LANDSCAPE NOTES:

1. ALL PLANT MATERIAL SHALL CONFORM TO THE STANDARDS FOR FLORIDA, PART 1, 1963.
2. BE BETTER AS GIVEN IN GRASSES AND STANDARDS FOR NURSERY PLANTS, PART 1, 1963.
3. IT SHALL BE THE RESPONSIBILITY OF THE LANDSCAPE CONTRACTOR TO VERIFY LOCATION OF ALL UNDERGROUND UTILITIES PRIOR TO BEGINNING WORK.
4. ALL PLANT BEANS TO RECEIVE 1/2" OF 50/50 MAX. SIZE SAND/SOILMIX TO PROVIDE A SMOOTH UNIFORM GRADE PRIOR TO INSTALLING SOD.
5. AN IRRIGATION SYSTEM SHALL BE INSTALLED PROVIDING 100% COVERAGE TO THE ENTIRE PLANTING AREA. THE IRRIGATION SYSTEM SHALL BE INSTALLED WITH THE NEW IRRIGATION SYSTEM.
6. ALL TREES AND PALMS TO BE PROPERLY STAKED AFTER PLANTING.
7. SEE DETAILS SHEET L-3 OVER MATERIALS LIST. IT SHALL BE THE RESPONSIBILITY OF THE LANDSCAPE CONTRACTOR TO VERIFY ALL MATERIALS ON PLANS BEFORE SUBMITTING BID.

SPECIAL NOTE:

70% OF TREES AND PALMS ON PROMENADE DECK ARE NATIVE
81% OF SHRUBS ON THE PROMENADE DECK ARE NATIVE
100% OF GROUND COVERS ON PROMENADE DECK ARE NATIVE

LEVEL-5 PROMENADE DECK LANDSCAPE

SCALE: 1" = 20'

STATE ROAD A-1-A (FIELD)
OCEAN BOULEVARD (PLAT)
(65' TOTAL R/W)

ATLANTIC BOULEVARD (FIELD)

MICHAEL FAY: LANDSCAPE ARCHITECT
REG.# 540
420 N.W. 7th ST., DELRAY BCH., FL. 33444
PH. 561-306-4003

PZ20-12000005
1/5/2021

PROJECT:
ATLANTIC 3350
3350 ATLANTIC BLVD.
POMPANO BEACH, FLORIDA

PROMENADE DECK LANDSCAPE PLAN

DATE:
1-29-20

DRAWN BY:
M. FAY

CHECKED BY:

CAD FILE:

REVISIONS:
7-6-20
10-7-20

SCALE Digitally
MICHAEL TAY, A.S.J.
REG. NO. 5488
TE: Michael
ael Date:
2020.10.07
2:58:53

SHEET NO.
L-2
OF 3
DRAWING FILE NO.